

EXTERIOR PANEL ELEVATION
SCALE: 1 : 2

INTERIOR PANEL ELEVATION
SCALE: 1 : 2

HCE-C620 CONTROL PANEL

BILL OF MATERIAL				
ITEM	QTY	DESCRIPTION	MANUFACTURER	CATALOG NUMBER
1	1	NEMA 4X ENCL. CONTINUOUS-HINGE WITH CLAMPS, 305X254X152MM	HOFFMAN	A12106CHNFSS
2	AS REQ'D	PANEL FOR ITEM 1	HOFFMAN	A12P10
3	AS REQ'D	LAMACOIDS	-	
4	AS REQ'D	35mm DIN RAIL	PHOENIX CONTACT	0801733
5	3	TERMINAL END CLAMP – CLIPFIX 35	PHOENIX CONTACT	3022218
6	5	FEED-THROUGH TERMINAL – UT 4-MTD	PHOENIX CONTACT	3046184
7	1	TERMINAL END PLATE – D-UT 2,5/4 TWIN	PHOENIX CONTACT	3047141
8	1	GROUND BAR, 6 TAPS	ILSCO	D167-6
9	1	SELECTOR SWITCH, 3- POSITION, MAINTAINED, 1 NO + 1 NC	SCHNEIDER ELECTRIC	9001SKS43BH13
10	1	SPDT CONTROL RELAY, 120 VAC INPUT	SCHNEIDER ELECTRIC	2966281

GENERAL NOTES:

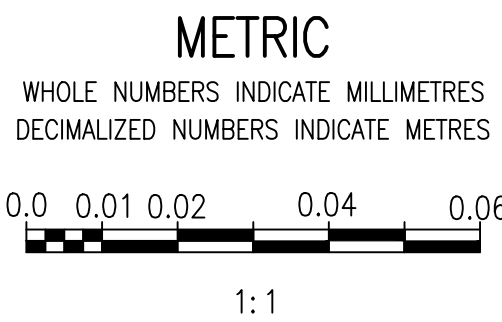
- ALL POWER AND 120 VAC WIRING ARE TEW/MTW 300V, 105°C INSULATION, STRANDED COPPER, 12 AWG OR LARGER WHERE CURRENT REQUIREMENTS DICTATE AS PER CEC REQUIREMENTS.
- ALL 24 VDC CONTROL WIRING IS TEW/MTW 300V, 105°C INSULATION, STRANDED COPPER, 16 AWG.
- COMPONENTS ARE LABELED AS SHOWN ON THE DRAWINGS.
- TESTED ALL WIRING AND COMPONENTS FOR FUNCTIONAL OPERATION, CORRECT CONNECTION, CONTINUITY AND INSULATION INTEGRITY. DOCUMENTED ALL TEST RESULTS.
- ALL MAJOR COMPONENTS INSIDE THE PANEL ARE LABELED WITH LAMACOIDS IN ACCORDANCE WITH MAJOR DESCRIPTIONS ON THE DRAWINGS.
- PROVIDED WIRE BARREL FERRULES FOR ALL WIRING.
- ALL TERMINAL BLOCKS ARE NUMBERED AS SHOWN IN THE DRAWINGS, COMPLETE WITH GROUP LABELING.
- ALL WIRES ARE MARKED AS INDICATED ON THE DRAWINGS.



1-0650M-E0052

DRAWING NUMBER

FIELD WIRING DIAGRAM, HEATER HCE-C620

REFERENCE DRAWINGS



					 148 Nature Park Way, Winnipeg, Manitoba Canada R3P 0X7 204-786-8080		ENGINEER'S SEAL		 THE CITY OF WINNIPEG WATER AND WASTE DEPARTMENT					
					DESIGNED BY: V. ELIMBAN				CHECKED BY: V. ELIMBAN		HURST PUMPING STATION PANEL LAYOUT HCE-C620 CONTROL PANEL			
					DRAWN BY: V. ELIMBAN				APPROVED BY: V. ELIMBAN					
					SCALE: 1 : 1				ISSUED FOR CONSTRUCTION BY: M. SKINNER					
					DATE: 2023/08/30				DATE: 2025/04/30		CITY DRAWING NUMBER 1-0650M-A0082			
					CONSULTANT NO.:				SHEET 001					
00 ISSUED FOR TENDER AND CONSTRUCTION					2025/04/30		VE		VE		REV. 00			
NO. REVISIONS					DATE		DESIGN		CHECK		SIZE A1			